

Specifications

Material:
RLM shades are constructed of 12 gauge 1100 series spun aluminum. Wall back plate and driver housing are cast aluminum, some types include a spun metal cover. All fasteners are stainless steel. Some washers may be galvanized. for all colors except galvanized paint finish. Screw hardware may not match paint.

Drivers:
Universal Voltage 120-277V is standard. 0-10V, TRIAC and ELV dimming to 1% protocols are standard for LED modules. (Refer to Driver Specification section for other specifications.)

Electrical:
Approximately 6" of pull wire extends from luminaire. All luminaires are prewired with 0-10V dimming leads. Post Arms and Wall Mounts are also prewired with line voltage & dimming leads.

Certifications:
Cord mounts are UL Listed for damp locations. Arm mount, stem mount and wall mount are UL Listed for wet locations. LED Module is IP66

Finish:
A polyester powder coat high quality finish. Marine grade finish is available.

Modifications:
Consult factory for custom or modified designs.

Buy American:
This product is assembled in the USA and meets the Buy America(n) government procurement requirements under FAR, DFARS, and DOT regulations. [Click here for additional information.](#)

Project Name: _____

Fixture Type: _____ Quantity: _____

Customer: _____

OSD622 LED

Weight: 12.5 lbs.

Catalog Logic									
OSD622	AM40W	D	40K	CRD-DCC	BLSF	200GLCLWH	WH	41	44
RLM Style	Light Source, Wattage & Dimming	Distribution	CCT	Driver Housing	Mounting	Glass/Guard	Accessories	Outside Shade Finish	Inside Shade Finish

Catalog Number	1	2	3	4	5	6	7	8	9
OSD622									

1	LIGHT SOURCE & WATTAGES
	AM10W (10W ANP Module COB)
	AM20W (20W ANP Module COB)
	AM30W (30W ANP Module COB)
	AM40W (40W ANP Module COB)

2	DISTRIBUTION
	D (Domed Acrylic Wide Distribution Lens)

3	CCT (COLOR TEMPERATURE)
	27K (2700K)
	30K (3000K)
	35K (3500K)
	40K (4000K)

4	DRIVER HOUSINGS
NA	No selection is required if Color Cord or Emergency Backup are not chosen
	Color Cord Driver Housing Options Choose Cord Style in Box 5
CRD-DCC	(Driver Housing for Color Cord only; 7 3/4" x 1 1/2")
SSC-DCC	(Driver Housing for SS Cable/Color Cord only; 7 3/4" x 1 1/2")
	Emergency Backup Driver Housing Options Choose EMG Driver in Box 7
CRD-DCCEM-BLC	(Emergency Ballast Housing for Black Cord only; 12" x 1 1/2")
CRD-DCCEM-WHC	(Emergency Ballast Housing for White Cord only; 12" x 1 1/2")
CRD-DCCEM	(Emergency Ballast Housing for Color Cord only; 12" x 1 1/2")
SSC-DCCEM-BLC	(Stainless steel cable with 6-foot black cord and 12" canopy)
SSC-DCCEM-WHC	(Stainless steel cable with 6-foot white cord and 12" canopy)
SSC-DCCEM	(Emergency Ballast Housing for SS Cable/Color Cord only; 12" x 1 1/2")
ST-DCCEM	(Emergency Ballast Housing for Stem only; 12" x 1 1/2")
	*Driver Housing finish will match fixture finish.

5	MOUNTING SOURCES*
	Arm Mounts
	E3 E4 E6 E7 E8 E9 E10 E11 E12 E18
	Wall Mounts
	WM54
	Stainless Steel Cable Mounts
SSC-BLC-5W	(Stainless steel cable with 6-foot black cord and 5 3/8" canopy)
SSC-WHC-5W	(Stainless steel cable with 6-foot white cord and 5 3/8" canopy)
	Cord Mounts
	Color & Style (See page 4 for color cord style)
NA	No Selection Required if: CRD-DCCEM-BLC; CRD-DCCEM-WHC; SSC-DCCEM-BLC or SSC-DCCEM-WHC is chosen in Box 4.
	SJT Cord
BLC	(6' Black SJT Cord)
WHC	(6' White SJT Cord)
	Solid Fabric Colored Cords Must Choose DCC or SSC-DCC Housing in Box 4
BLSF	(6' Black)
ORSF	(6' Orange)
GYSF	(6' Gray)
LGSF	(6' Lime Green)
CHSF	(6' Chocolate Brown)
KGSF	(6' Kelly Green)
WHSF	(6' White)
CBSF	(6' Cobalt Blue)
CASF	(6' Cardinal)
SBSF	(6' Sky Blue)
	Patterned Fabric Colored Cords Must Choose DCC or SSC-DCC Housing in Box 4
BWHPF	(6' Black/White Houndstooth)
BIHPF	(6' Brown/Ivory Houndstooth)
GYCPF	(6' Gray/Citrus Yellow)
MOSPF	(6' Magenta/Orange Stripe)
NMTPF	(6' Navy Mini Tweed)
	Glossy Fabric Colored Cords Must Choose DCC or SSC-DCC Housing in Box 4
GMGF	(6' Gun Metal)
SSGF	(6' Sterling Silver)
CPGF	(6' Copper Penny)
BRGF	(6' Bronze)
GOGF	(6' Gold)
	Stem Mounts*
1/2" (13/16" OD) Rigid Stems	3/4" (1" OD) Rigid Stems
2ST6 2ST12 2ST18	3ST6 3ST12 3ST18
2ST24 2ST36 2ST48	3ST24 3ST36 3ST48
2ST60 2ST72 2ST96	3ST60 3ST72 3ST96
	*Arm mount, Wall mount or Stem finish will match fixture finish.

6	GLASS & GUARDS
	Up to 30W Max
100GLCL	(Clear Glass)
100GLFR	(Frosted Glass)
100GLPR	(Prismatic Glass)
100GLCLGUP	(Clear Glass & Small Wire Guard)
100GLFRGUP	(Frosted Glass & Small Wire Guard)
100GLPRGUP	(Prismatic Glass & Small Wire Guard)
100GLCLGUPC	(Clear Glass and Cast Guard)
100GLFRGUPC	(Frosted Glass and Cast Guard)
100GLPRGUPC	(Prismatic Glass and Cast Guard)
100GLGUP	(Small Wire Guard with No Glass)
100GLGUPC	(Small Cast Guard with No Glass)
	*Cast and Wire Guard finish will match fixture.

Project Name: _____

Fixture Type: _____ Quantity: _____

Customer: _____

7 MOUNTING ACCESSORIES	
CBC	(Cast back plate Spun Alum Cover)**
EMG-LED06	(6W, LED Emergency Driver, DCCEM Placement, ANP Module Only)
EMG-LED10	(10W, LED Emergency Driver, DCCEM Placement, ANP Module Only)
EMG-LED16	(16W, LED Emergency Driver, DCCEM Placement, ANP Module Only)
EMG-LED20	(20W, LED Emergency Driver, DCCEM Placement, ANP Module Only)
EMG-LEDR05	(5W, LED Emergency Driver, Remote Placement up to 30', ANP Module Only, Provided with Flexible Conduit)
EMG-LEDR7.8	(7.8W, LED Emergency Driver, Remote Placement up to 30', ANP Module Only, Provided with Flexible Conduit)
EMG-LEDR10.7	(10.7W, LED Emergency Driver, Remote Placement up to 30', ANP Module Only, Provided with Flexible Conduit)
EMG-LEDR17	(17W, LED Emergency Driver, Remote Placement up to 30', ANP Module Only, Provided with Flexible Conduit)
SC	(Scroll for Arms)**
SLC	(Sloped Ceiling Mount, 20° Max)**
SQ	(Square Back Plate)**
TBK	(Turn Buckle Kit)**
*Most EM Packs are remote mount only (consult factory). For percent lumens in emergency mode, see Technical Section at www.ANPlighting.com	
**Accessory finish will match fixture finish.	

8		9		FINISHES					
*Premium and Marine Grade Finish have additional charges									
Standard Colors	Standard Grade	Marine Grade*	Premium Colors	Premium Grade*	Marine Grade*				
Aspen Green	10	10M	High Gloss Black	01	01M				
Cantaloupe	11	11M	Arctic Silver	14	14M				
Lilac	12	12M	Candy Apple Red	64	64M				
Putty	13	13M	Cobalt Blue	65	65M				
Raw Unfinished	40	NA	Caramel	66	66M				
Black	41	41M	Butterscotch	67	67M				
Forest Green	42	42M	Black Silver	68	68M				
Bright Red	43	43M	Gunmetal Gray	69	69M				
White	44	44M	Mayan Gold	79	NA				
Bright Blue	45	45M	Textured Desert Stone	80	80M				
Sunny Yellow	46	46M	Extreme Chrome	81	81M				
Aqua Green	47	47M	Graystone	82	82M				
Galvanized	49	NA	Oil Rubbed Bronze	83	83M				
Navy	50	50M	Carbon Graphite	96	96M				
Architectural Bronze	51	51M							
Patina Verde	52	52M							
Copper Clay	53	53M							
Silver	56	56M							
Black Verde	61	61M							
Painted Chrome	70	70M							
Painted Copper	71	71M							
Consult Factory for additional paint charges and availability.									

8		9		FINISHES					
*Premium and Marine Grade Finish have additional charges									
Standard Colors	Standard Grade	Marine Grade*	Premium Colors	Premium Grade*	Marine Grade*				
Textured Black	72	72M							
Matte Black	73	73M							
Textured Architectural Bronze	76	76M							
Textured White	77	77M							
Textured Silver	78	78M							
Consult Factory for additional paint charges and availability.									

PERFORMANCE TABLE - ANP MODULE - INITIAL LUMENS																						
			2700K				3000K				3500K				4000K							
LED CATALOG	WATTS	DISTRIBUTION	INITIAL LUMENS	lm/W	B	U	G	INITIAL LUMENS	lm/W	B	U	G	INITIAL LUMENS	lm/W	B	U	G	INITIAL LUMENS	lm/W	B	U	G
AM10W	10W	TYPE V	847	85	1	0	0	888	89	1	0	0	899	90	1	0	0	910	91	1	0	0
AM20W	20W	TYPE V	1694	85	1	0	0	1777	89	1	0	0	1799	90	1	0	0	1820	91	1	0	0
AM30W	30W	TYPE V	2541	85	1	0	0	2665	89	1	0	0	2698	90	1	0	0	2730	91	1	0	0
AM40W	40W	TYPE V	3388	85	2	0	0	3554	89	2	0	0	3597	90	2	0	0	3640	91	2	0	0

MODULE SPECIFICATION
• CREE XLAMP™ CMU
• Typical Efficacy 90 lm/W
• CCT: 2700K, 3000K, 3500K, 4000K
• CRI: 90 (min) 92 Typical
• 3-Step Ellipse
• Certifications: UL Recognized, RoHS, ENEC, REACH

DRIVER SPECIFICATION
• Universal Input: 120-277V
• Dimming: 0-10V, TRIAC, ELV (Dims to 1%)
• Power Factor @ Full Load >90%
• THD @ Full Load <20%
• Constant Current Output 50/60Hz
• Operating Temperature: -30°C Minimum
• Lifetime: >50,000 hours
• Ingress Protection: IP66
• Certifications: UL Recognized, CE, FCC, Energy Star, DLC, CA Title 24

FINISHES
• A polyester powder coat high quality finish is electro-statically applied and baked at 430° for exceptional durability and color retention. Products undergo an intensive five-step cleansing and pretreatment process for maximum paint adhesion.
• Marine grade finish provides superior salt, humidity and UV protection. This coating withstands up to 3,000 hours of continuous salt spray, comes with a 5-year warranty and is available in either a textured or gloss surface.

WARRANTY
See www.ANPlighting.com for complete fixture warranty.
LED warranty information
• 5 year limited warranty*
• *Limited Warranty: A typical year is defined as 4,380 hours of operation.

Project Name: _____

Fixture Type: _____ Quantity: _____

Customer: _____

ACCESSORIES



EMG-LED



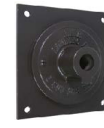
CBC



PC



SLC



SQ



SWL



TBK



SC



SSC

POPULAR ARM MOUNTS

Dimensions are Projection x Height | CB included with all arms [Click here for all Arm Mount styles](#)



E3 | 35" x 11 7/8"



E4 | 29" x 14"



E6 | 29" x 9 1/4"



E7 | 44 1/4" x 9 1/8"



E8 | 32 1/4" x 12 1/2"



E9 | 28" x 43 5/8"



E10 | 55 1/4" x 18"



E11 | 38 1/4" x 17 1/4"



E12 | 40 3/8" x 2"



E18 | 30 3/4" x 21 3/8"

POPULAR WALL MOUNTS

Dimensions are Projection x Height [Click here for all Wall Mount styles](#)



WM54 | 23 3/8" x 18"

DRIVER HOUSINGS



DCC
(7 3/4" x 1 1/2") Cord Only



DCC
(7 3/4" x 1 1/2") Cable/Cord Only



DCCEM
(12" x 1 1/2") Cord Only



DCCEM
(12" x 1 1/2") Cable/Cord Only



DCCEM
(12" x 1 1/2")

Project Name: _____

Fixture Type: _____ Quantity: _____

Customer: _____

GLASS GUARD

▶ UP TO 30W MAX ▶ CL = Clear ▶ FR = Frosted ▶ PR = Prismatic ▶ 100 = Small ▶ 200 = Large



Glass Only
9 1/4" H X 5" W
200GLCL
200GLFR
200GLPR



Glass with Cast Guard
10 1/4" H X 5 1/2" W
200GLCLGUPC
200GLFRGUPC
200GLPRGUPC



Glass with Wire Guard
10 1/4" H X 5" W
200GLCLGUP
200GLFRGUP
200GLPRGUP



GUPC Guard Only
10 1/4" H X 5 1/2" W
200GLGUPC (Cast Guard)



GUP Guard Only
10 1/4" H X 5" W
200GLGUP (Wire Guard)

SOLID FABRIC COLORED CORDS

All fabric Color Cords are three conductor, 1/4" diameter



GYSF | Gray



CHSF | Chocolate Brown



WHSF | White



CASF | Cardinal



LGSF | Lime Green



KGSF | Kelly Green



CBSF | Cobalt Blue



SBSF | Sky Blue

PATTERNED FABRIC COLORED CORDS

All fabric Color Cords are three conductor, 1/4" diameter



BIHPF | Brown/Ivory Houndstooth



GYCPF | Gray/Citrus Yellow



MOSPF | Magenta/Orange Stripe



NMTPF | Navy Mini Tweed

GLOSSY FABRIC COLORED CORDS

All fabric Color Cords are three conductor, 1/4" diameter



SSGF | Sterling Silver



CPGF | Copper Penny



BRGF | Bronze



GOGF | Gold

Project Name: _____

Fixture Type: _____ Quantity: _____

Customer: _____

FINISHES COLORS

STANDARD																		PREMIUM																				
WHITE	TEXTURED WHITE	SILVER	PAINTED CHROME	PAINTED GALVANIZED	PUTTY	TEXTURED SILVER	TEXTURED BLACK	MATTE BLACK	BLACK	BLACK VERDE	PATINA VERDE	FOREST GREEN	AQUA GREEN	ASPEN GREEN	BRIGHT BLUE	NAVY	SUNNY YELLOW	CANTALOUPE	LILAC	BRIGHT RED	PAINTED COPPER	COPPER CLAY	ARCHITECTURAL BRONZE	TEXTURED ARCHITECTURAL	EXTREME CHROME	ARCTIC SILVER	CARBON GRAPHITE	GRAYSTONE	GUNMETAL GRAY	OIL RUBBED BRONZE	BLACK SILVER	HIGH GLOSS BLACK	CANDY APPLE RED	TEXTURED DESERT STONE	BUTTERSCOTCH	MAYAN GOLD	CARAMEL	COBALT BLUE